



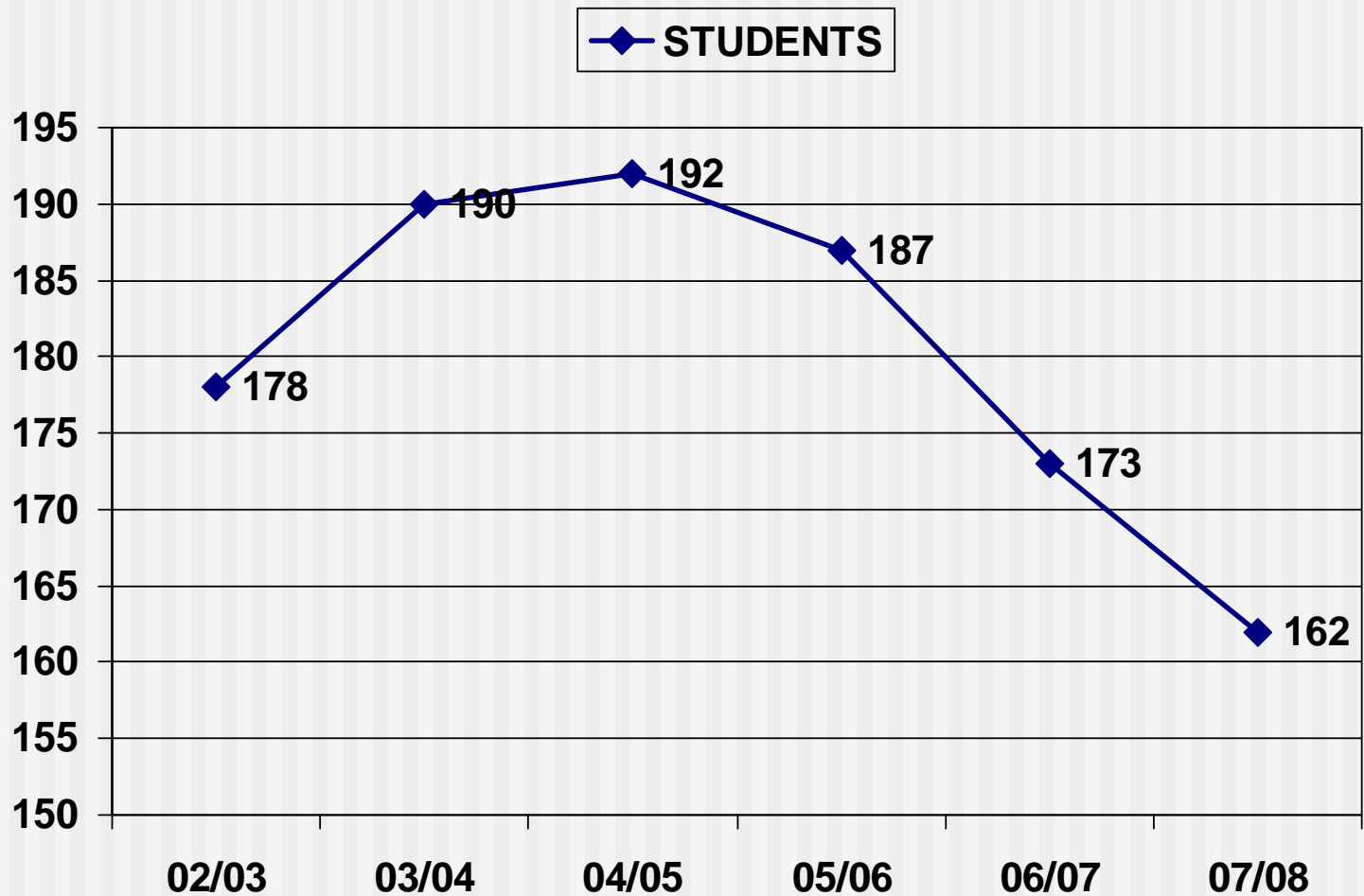
North Salem Central School District

Pupil Personnel

Presented on March 19, 2008

Mrs. MaryJo Hauser
Assistant Superintendent for Pupil
Personnel Services

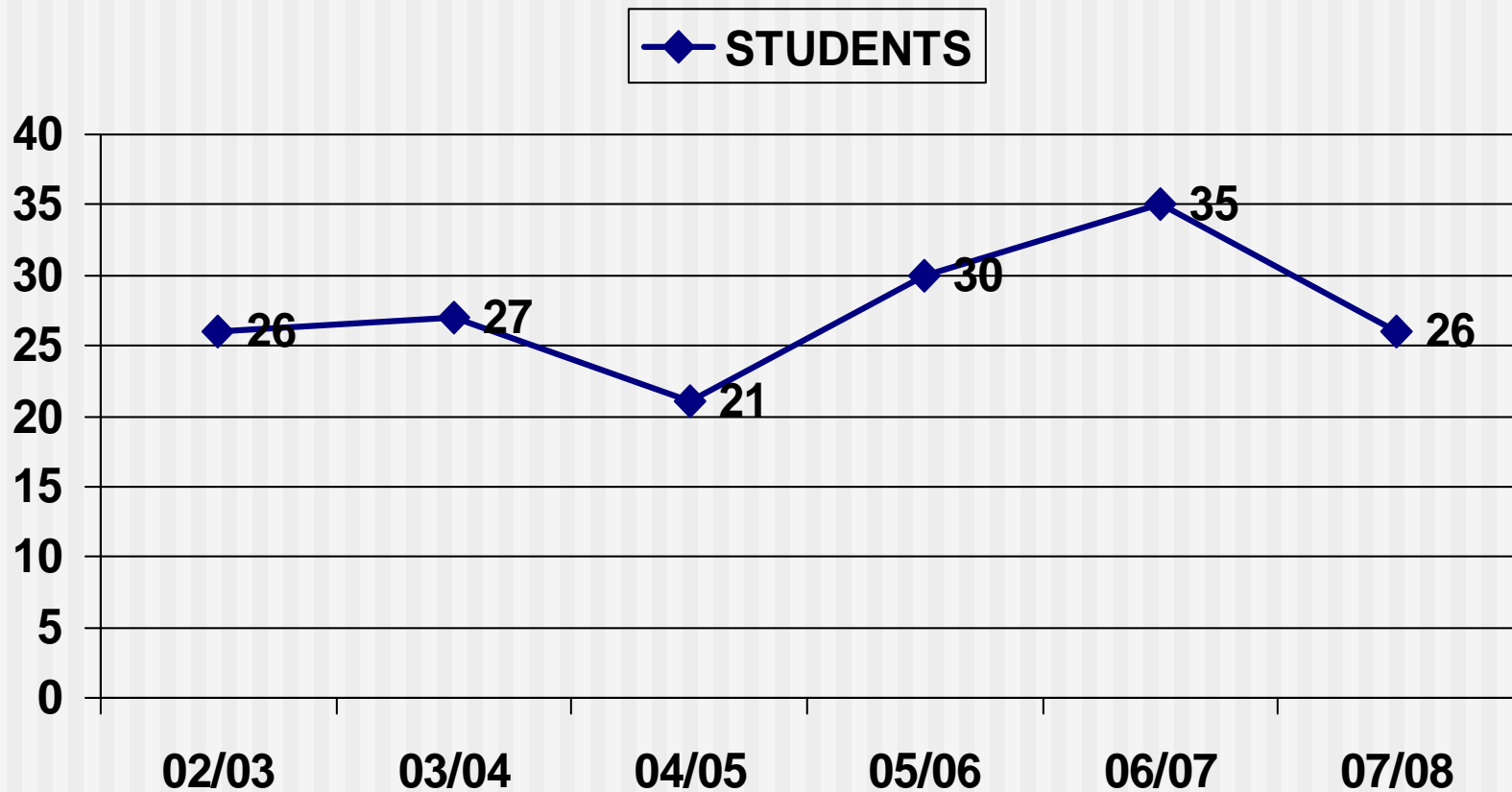
CSE Classified Students



School Age Disabilities

Disability	2002	2003	2004	2005	2006	2007
Emotionally Disturbed	19	27	30	25	21	12
Learning Disabled	105	103	107	94	88	83
Other Health Impaired	17	20	16	19	17	21
Multiply Disabled	13	14	12	12	13	9
Speech Impaired	17	19	21	29	25	25
Autism	5	5	4	7	7	10
Other	2	1	2	1	1	2

CPSE (Pre-school) Classified Students



District Funded Staffing Special Education at PQ

07-08 Staffing

- 7 special ed teachers
- 1 SE Reading Teacher
 - Grant funded
- 1 psychologist
- 2.0 sp/language therapists
- 1 social worker
- 1 occupational therapist
- 5 teacher assistants
- 5 FT teacher aides
- 5 PT teacher aides
 - (Based on needs)
- .2 physical therapist - itinerant

08-09 Staffing

- NO STAFF CHANGES

District Funded Staffing for Special Education MS/HS

07-08 Staffing

- 12 sp ed teachers
- 1 psychologist
- 1 social worker
- .5 speech therapist
- 5.2 aides
 - 2 for testing rooms
 - 2 for 1-1 CSE students
 - 8.5 periods

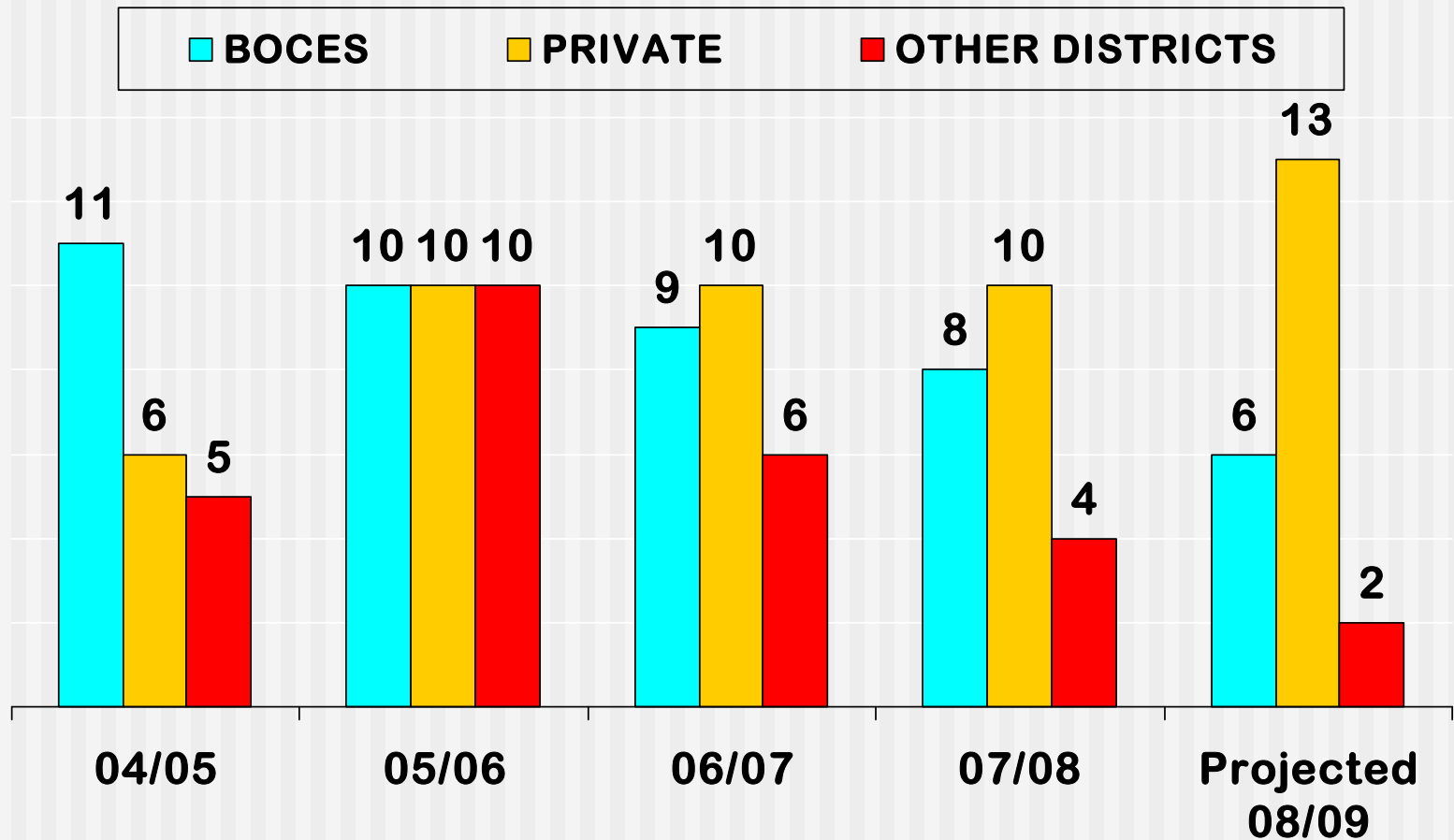
08-09 Staffing

- 12 sp ed teachers
- 1 psychologist
- 1 social worker
- .6 speech therapist
- 5.2 aides
 - 2 for testing rooms
 - 2 for 1-1 CSE
 - 8.5 periods TBD

Need for +.1 Speech/Language Therapist Middle/High School

- Individual Student Needs
- Continuity of Service
- Flexibility in Programming
- Assessment Time

Out of District Actual Placements



Costs of Out of District Placements 2008/2009

	6:1:1	8:1:1	12:1:1	12:1:4
BOCES		\$59,617.	(Alternate HS) \$37,939.	
PRIVATE	\$57,750.		\$31,484.	\$35,794. \$62,194.
PUBLIC			\$59,325. \$64,570.	
RESIDENTIAL	\$44,458.	\$79,260.		\$36,264.

Out of District Placements Projections 2008-2009

PLACEMENT	NUMBER OF STUDENTS	TOTAL TUITION
Other NYS districts	2 + 1	\$ 176,012.
Private Day and Res	13 + 2	\$ 800,921.

BOCES Placements Projections 2008-2009

STUDENTS	TUITION
6 + 3 District Schools Learning Center Alternative HS SW BOCES	\$ 570,000 Includes: Teacher of the Visually Impaired at PQ and MS Psychiatric Evals

Related Services

- Applied Behavior Analysis
- Orientation and Mobility
- Parent Training
- Physical Therapy
- Wilson Tutor

- Total Cost: \$96,020.

Guidance Services

07/08 Staffing

- 4 counselors
 - 6/7
 - 8/9
 - 10/12
 - 10/12 and Chairperson
- 40 Summer days

08/09 Staffing

- 4 counselors
 - 6/7
 - 8/9
 - 10/12
 - 10/12 and Chairperson
- 48 Summer days